

GENERAL CATALOGUE 2010-2011



A Stainless Steel Modular Railing System



THE SPECIALIST MANUFACTURER IN STAINLESS STEEL

In this catalogue we specify the technical details for all the available designs and models in the B·INOX stainless steel modular railing program.

Combined Stainless Steel and Glass Designs

- 4 B·INOX-300 (With Clamps)
- 6 B·INOX-310 (With U-channels)
- 8 B·INOX-320 (With U-channels, without Handrail)
- 9 B·INOX-SAL (Point-fittings Glass-to-Wall)
- 10 B·INOX-400 (With Clamps)

Stainless Steel Designs

- 12 B·INOX-100 (With Vertical Bars)
- 14 B·INOX-200 (With Horizontal Bars)
- 15 B·INOX-210 (With Cables)
- 16 B·INOX-15Q
- 17 B·INOX-SM (Wall Railings)

Components

- 18 Handrail Tubes ø43
- 19 Handrail Connectors ø43
- 22 Handrail Tubes 50x20
- 23 Handrail Connectors 50x20
- 23 Brackets for Wooden Handrails
- 24 Bases for Top Mounting
- 25 Bases for Side Mounting
- 26 Accessories to Reinforce the Installation

27 B·INOX Gates

28 Wall Mounted Handrails B·INOX-PS

29 Glass Panel Mounted Handrails B·INOX-PS-V

30 Railings for Handicap Ramps

31 FAQ - Frequently Asked Questions about B·INOX

- 32 B·INOX Maintenance
- 33 Anchoring Accessories
- 33 Installation and Mounting Recommendations

34 Steeps to Follow for Successful Interaction between Customers and CBM

35 B·INOX Samples



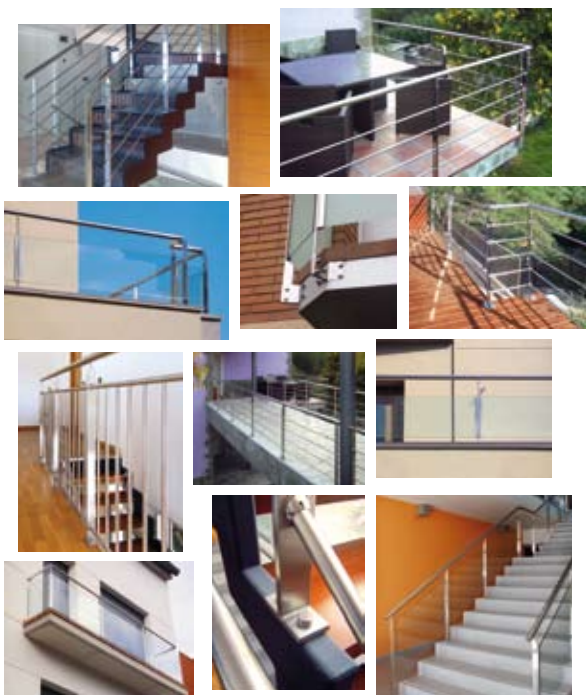
CBM-Grup Blamar **develops and produces** the stainless steel modular railing system B·INOX in its own production facilities in Arenys de Munt (Barcelona). The processes are carried out as detailed in the quality manual according to the **ISO 9001:2008** standards. CBM and all the companies in the Blamar Group were certified by TÜV Rheinland in July 2009.

CBM's main objective is to provide utmost quality and service in all its product ranges. Its professional team has many years of experience in the stainless steel sector and this enables CBM to respond to its customer's different needs in a cost and time efficient way.

The controlled production process of all the different B·INOX components offers a reliable quality. This also involves the use of the best possible materials (AISI 316 whenever required) as well as state-of-the-art technology to produce components with the highest possible finish.

You may find a **variety of B·INOX installation examples** in our **general catalogue** or on our webpage **www.cbmkeymat.com**.

Thank you for your interest in B·INOX!

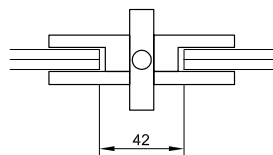


**THE SPECIALIST MANUFACTURER
IN STAINLESS STEEL**

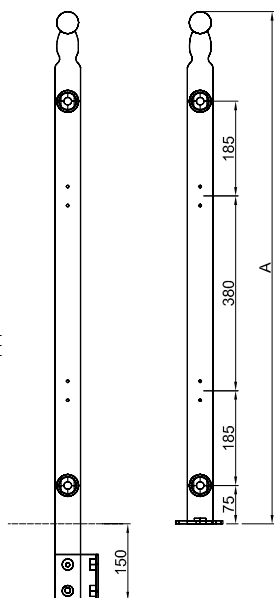


Drawing No	Product Code	Height (A) mm	Grade of Stainless Steel	Surface	Fixing Details	Included in the Price
1	BI300.1	1000	+/-04 Solid AISI 304 +/-16 Solid AISI 316	Horizontal run	Top mounted	<ul style="list-style-type: none"> • 2 adjustable ball connectors for ø15 mm tube • Pre-threaded holes for the fixing of the pz-1 clamps (blind ended in end-uprights)
	BI300.1A	1100				
2	BI300.2	1000	+/-04 Solid AISI 304 +/-16 Solid AISI 316	Horizontal run	Side mounted	<ul style="list-style-type: none"> • 2 adjustable ball connectors for ø15 mm tube • Pre-threaded holes for the fixing of the pz-1 clamps (blind ended in end-uprights)
	BI300.2A	1100				
3	BI300.3	1000	+/-04 Solid AISI 304 +/-16 Solid AISI 316	Corner in horizontal run	Top mounted	<ul style="list-style-type: none"> • 2 90° fixed half-ball connectors for ø15 mm tube • 4 90° adaptors for pz-1 clamps • 90° angle bend
	BI300.3A	1100				
4	BI300.4	1000	+/-04 Solid AISI 304 +/-16 Solid AISI 316	Stairs	Top mounted	<ul style="list-style-type: none"> • 2 adjustable ball connectors for ø15 mm tube • Pre-threaded holes for the fixing of the pz-1 clamps (blind ended in end-uprights)
	BI300.4A	1100				
5	BI300.5	1000	+/-04 Solid AISI 304 +/-16 Solid AISI 316	Stairs	Side mounted	<ul style="list-style-type: none"> • 2 adjustable ball connectors for ø15 mm tube • Pre-threaded holes for the fixing of the pz-1 clamps (blind ended in end-uprights)
	BI30.5A	1100				
6	BI300.6	1000	+/-04 Solid AISI 304 +/-16 Solid AISI 316	Stairs/landing	Top mounted	<ul style="list-style-type: none"> • 2 double-ball connectors for ø15 tubes (stairs/landing) • Pre-threaded holes for the fixing of the pz-1 clamps (blind ended in end-uprights) • Simple ball connector prod. code BI17
	BI300.6A	1100				
7	BI300.7	1000	+/-04 Solid AISI 304 +/-16 Solid AISI 316	Stairs/landing	Side mounted	<ul style="list-style-type: none"> • 2 double-ball connectors for ø15 tubes (stairs/landing) • Pre-threaded holes for the fixing of the pz-1 clamps (blind ended in end-uprights) • Simple ball connector prod. code BI17
	BI300.7A	1100				
8	BI300.8	1000	+/-04 Solid AISI 304 +/-16 Solid AISI 316	Concave corner in horizontal run	Side mounted	<ul style="list-style-type: none"> • 2 90° fixed half-ball connectors for ø15 mm tube • 4 90° adaptors for pz-1 clamps • 90° angle bend
	BI300.8A	1100				
9	BI300.9	1000	+/-04 Solid AISI 304 +/-16 Solid AISI 316	Convex corner in horizontal run	Side mounted	<ul style="list-style-type: none"> • 2 90° fixed half-ball connectors for ø15 mm tube • 4 90° adaptors for pz-1 clamps • 90° angle bend
	BI300.9 A	1100				

Basic dimensions:
The different
B-INOX-300
designs share the
following measures
A = Height A



Solid stainless steel 50x12 mm





Drawing
No

B·INOX-300 and 302 components

ø15x1,5 mm Tube + **End cap for ø15 tube**
Prod. code BI13/04 and BI13/16 Prod. code BI14/04 and BI14/16



Components for B·INOX-300/301 and 302 installations



Clamp PZ-1

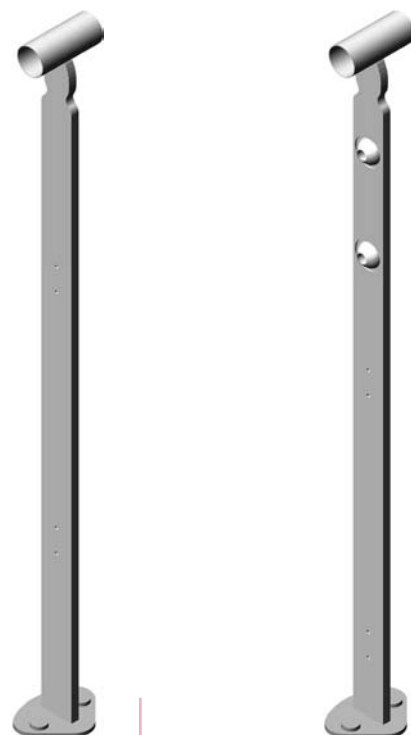
For glass thickness from 8 to 12 mm.
Other glass thicknesses on request.
Dimensions: 50x40x24.

Prod. code	Glass thickness		Prod. code	Glass thickness	
3201	AISI-304	4+4	3204	AISI-316	4+4
3202	AISI-304	5+5	3205	AISI-316	5+5
3203	AISI-304	6+6	3206	AISI-316	6+6

The clamps are delivered fixed to the uprights.

B·INOX suggestion: These clamps can be mounted directly on the wall without end-uprights. A solution for round columns and pillars is also available – PZ-1.1 with a round base.

- Please see page 24 and 25 for further details about the different anchoring bases (top and side mounted).
- The prices for the uprights include snap covers fitting M8 anchors or M8 bolts+ tread nuts. Please see page 33 for further information about anchoring according to mounting surface.
- For binox 300, 301 and 302 the maximum distance between uprights is 1,5 (Unless the glass manufacturer recommends otherwise). CBM does not supply the glass panels.
- B·INOX 300, 301 and 302 comply with the Spanish Regulations CTE SU and CTE AE (In accordance with the EU Construction Products Directive 89/106/ECC) regarding heights, configuration and loads for residential, commercial and office applications.
- For use in installations with a drop of 6 m or higher the references with height (A) = 1100 mm should be used to comply with Standards.



Option B·INOX-301

It is the same design as B·INOX-300 but without the ø15 tubes to protect the glass edges.

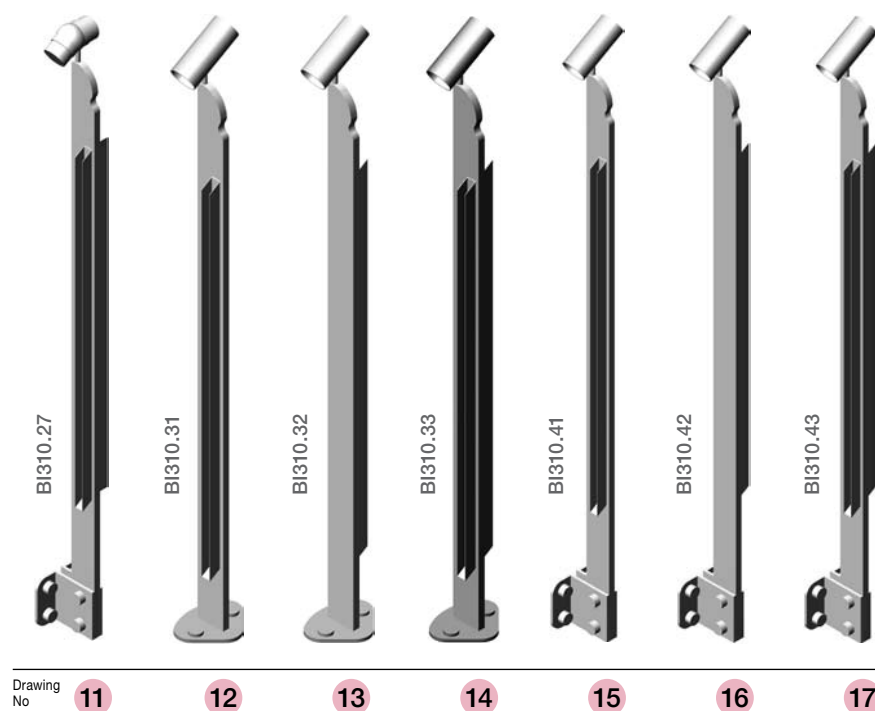
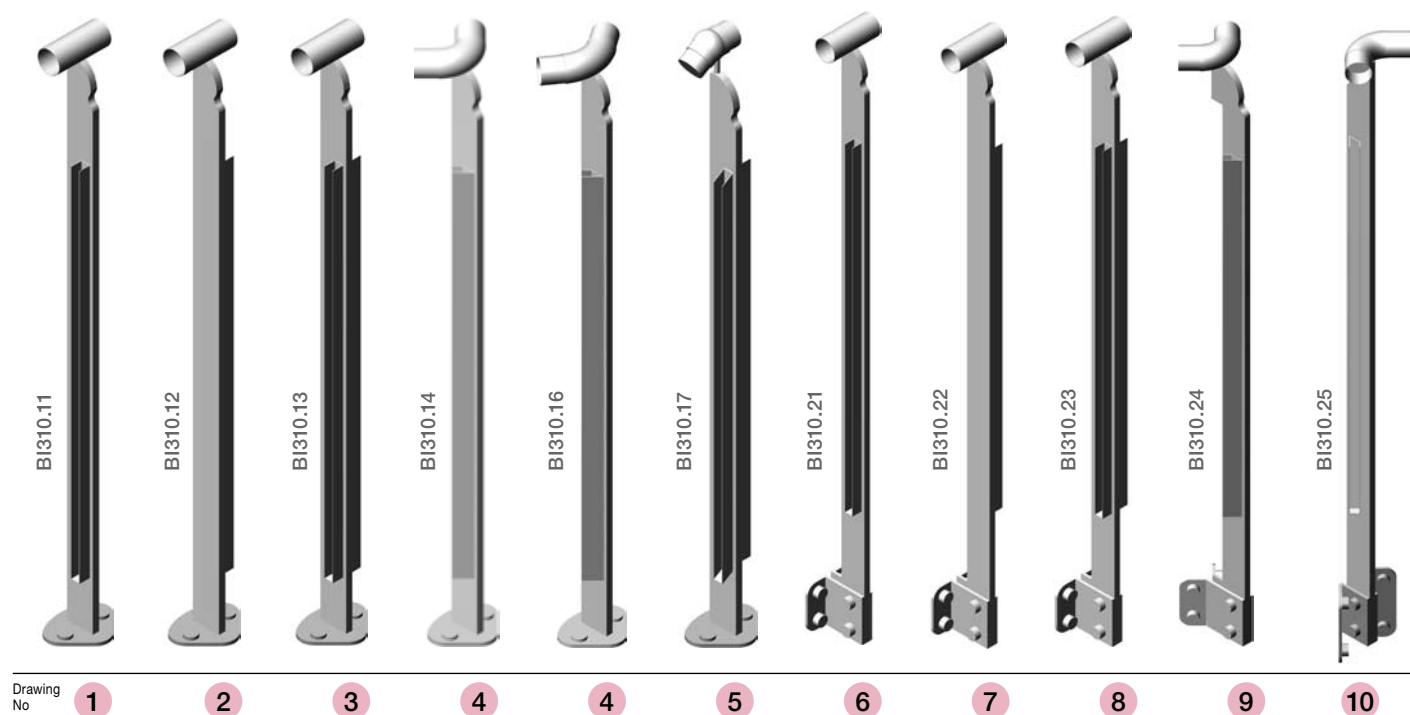
All the B·INOX-300 models are also available for B·INOX-301.

Option B·INOX-302

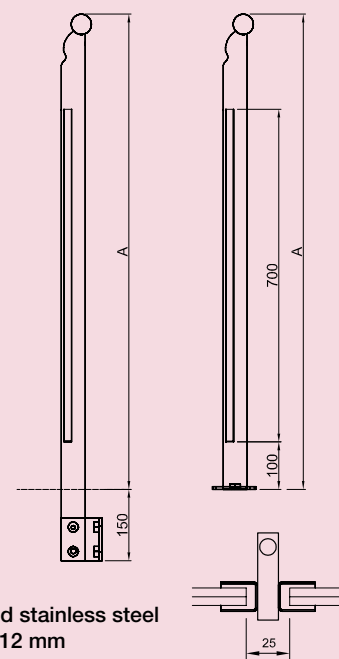
It is the same design as B·INOX-300 but with both ø15 tubes placed on top of the glass. (Also available with 3 tubes).

All the B·INOX-300 models are also available for B·INOX-302.

Drawing No	Product Code	Height (A) mm	Grade of Stainless Steel	Surface	Fixing Details	U-channel Measures (Inner measures width x height). Product Code	U-channel Position
1	BI310.11	1000	+ /04 Solid AISI 304 + /16 Solid AISI 316	Horizontal run	Top mounted	+ /8 (12x20) + /10 (15x20)	To the left (seen from the outside)
	BI310.11A	1100					
2	BI310.12	1000	+ /04 Solid AISI 304 + /16 Solid AISI 316	Horizontal run	Top mounted	+ /8 (12x20) + /10 (15x20)	To the right (seen from the outside)
	BI310.12A	1100					
3	BI310.13	1000	+ /04 Solid AISI 304 + /16 Solid AISI 316	Horizontal run	Top mounted	+ /8 (12x20) + /10 (15x20)	Both sides
	BI310.13A	1100					
4	BI310.14	1000	+ /04 Solid AISI 304 + /16 Solid AISI 316	Corner in horizontal run	Top mounted	+ /8 (12x20) + /10 (15x20)	Both sides (including 90° angle bend prod. code BI19)
	BI310.14A	1100					
	BI310.16	1000	+ /04 Solid AISI 304 + /16 Solid AISI 316	Corner in horizontal run. Not 90°	Top mounted	+ /8 (12x20) + /10 (15x20)	Both sides (including angle bend prod. code BI20 or BI21)
	BI310.16A	1100					
5	BI310.17	1000	+ /04 Solid AISI 304 + /16 Solid AISI 316	Landing/stairs	Top mounted	+ /8 (12x20) + /10 (15x20)	Both sides straight/inclined U (including simple ball connector prod. code BI17)
	BI310.17A	1100					
6	BI310.21	1000	+ /04 Solid AISI 304 + /16 Solid AISI 316	Horizontal run	Side mounted	+ /8 (12x20) + /10 (15x20)	To the left (seen from the outside)
	BI310.21A	1100					
7	BI310.22	1000	+ /04 Solid AISI 304 + /16 Solid AISI 316	Horizontal run	Side mounted	+ /8 (12x20) + /10 (15x20)	To the right (seen from the outside)
	BI310.22A	1100					
8	BI310.23	1000	+ /04 Solid AISI 304 + /16 Solid AISI 316	Horizontal run	Side mounted	+ /8 (12x20) + /10 (15x20)	Both sides
	BI310.23A	1100					
9	BI310.24	1000	+ /04 Solid AISI 304 + /16 Solid AISI 316	Concave corner in horizontal run	Side mounted	+ /8 (12x20) + /10 (15x20)	Both sides (including angle bend prod. code BI19)
	BI310.24 A	1100					
10	BI310.25	1000	+ /04 Solid AISI 304 + /16 Solid AISI 316	Convex corner in horizontal run	Side mounted	+ /8 (12x20) + /10 (15x20)	Both sides (including angle bend prod. code BI19)
	BI310.25 A	1100					
11	BI310.27	1000	+ /04 Solid AISI 304 + /16 Solid AISI 316	Landing/stairs	Side mounted	+ /8 (12x20) + /10 (15x20)	Both sides straight + inclined U (including simple ball connector prod. code BI17)
	BI310.27 A	1100					
12	BI310.31	1000	+ /04 Solid AISI 304 + /16 Solid AISI 316	Stairs	Top mounted	+ /8 (12x20) + /10 (15x20)	To the left (seen from the outside) Inclined U according to project specifications
	BI310.31A	1100					
13	BI310.32	1000	+ /04 Solid AISI 304 + /16 Solid AISI 316	Stairs	Top mounted	+ /8 (12x20) + /10 (15x20)	To the right (seen from the outside) Inclined U according to project specifications
	BI310.32A	1100					
14	BI310.33	1000	+ /04 Solid AISI 304 + /16 Solid AISI 316	Stairs	Top mounted	+ /8 (12x20) + /10 (15x20)	Both sides. Inclined U according to project specifications
	BI310.33A	1100					
15	BI310.41	1000	+ /04 Solid AISI 304 + /16 Solid AISI 316	Stairs	Side mounted	+ /8 (12x20) + /10 (15x20)	To the left (seen from the outside) Inclined U according to project specifications
	BI310.41A	1100					
16	BI310.42	1000	+ /04 Solid AISI 304 + /16 Solid AISI 316	Stairs	Side mounted	+ /8 (12x20) + /10 (15x20)	To the right (seen from the outside) Inclined U according to project specifications
	BI310.42A	1100					
17	BI310.43	1000	+ /04 Solid AISI 304 + /16 Solid AISI 316	Stairs	Side mounted	+ /8 (12x20) + /10 (15x20)	Both sides. Inclined U according to project specifications
	BI310.43A	1100					



Basic dimensions: The different B-INOX-310 designs share the following measures
A = Height A



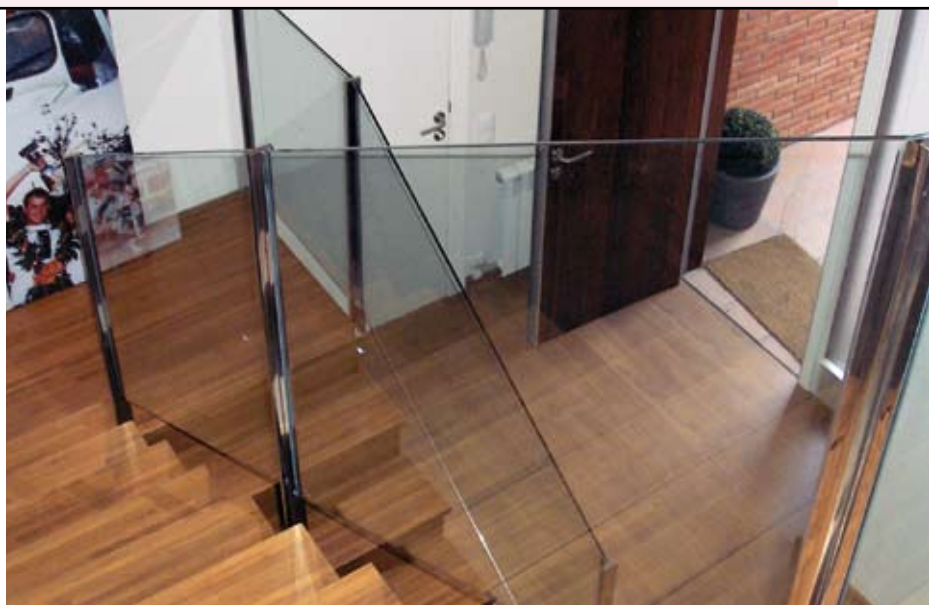
Solid stainless steel
50x12 mm



- Apply structural silicone sealant to fix the glass panel.
- Please see page 24 and 25 for further details about the different anchoring bases (top and side mounted).
- The prices for the uprights include snap covers fitting M8 anchors or M8 bolts+ tread nuts. Please see page 33 for further information about anchoring according to mounting surface.
- For B-INOX 300, 301 and 302 the maximum distance between uprights is 1,5 (Unless the glass manufacturer recommends otherwise). CBM does not supply the glass panels.
- B-INOX 300, 301 and 302 comply with the Spanish Regulations CTE SU and CTE AE (In accordance with the EU Construction Products Directive 89/106/ECC) regarding heights, configuration and loads for residential, commercial and office applications.
- For use in installations with a drop of 6 m or higher the references with height (A) = 1100 mm should be used to comply with Standards.

Drawing No	Product Code	Grade of Stainless Steel	Surface	Fixing Details	U-channel Measures (Inner measures width x height). Product Code	U-channel Position
1	BI320.11	+ /04 Solid AISI 304 + /16 Solid AISI 316	Horizontal run	Top mounted	+ /8 (12x20) + /10 (15x20)	Only 1 side
2	BI320.13	+ /04 Solid AISI 304 + /16 Solid AISI 316	Horizontal run	Top mounted	+ /8 (12x20) + /10 (15x20)	Both sides
3	BI320.14	+ /04 Solid AISI 304 + /16 Solid AISI 316	Corner in horizontal run	Top mounted	+ /8 (12x20) + /10 (15x20)	Both sides (90° angle)
	BI320.17	+ /04 Solid AISI 304 + /16 Solid AISI 316	Landing/stairs	Top mounted	+ /8 (12x20) + /10 (15x20)	Both sides: 1 straight / 1 inclined
4	BI320.21	+ /04 Solid AISI 304 + /16 Solid AISI 316	Horizontal run	Side mounted	+ /8 (12x20) + /10 (15x20)	Only 1 side
5	BI320.23	+ /04 Solid AISI 304 + /16 Solid AISI 316	Horizontal run	Side mounted	+ /8 (12x20) + /10 (15x20)	Both sides
	BI320.24	+ /04 Solid AISI 304 + /16 Solid AISI 316	Concave corner in horizontal run	Side mounted	+ /8 (12x20) + /10 (15x20)	Both sides (90° angle)
	BI320.25	+ /04 Solid AISI 304 + /16 Solid AISI 316	Convex corner in horizontal run	Side mounted	+ /8 (12x20) + /10 (15x20)	Both sides (90° angle)
	BI320.27	+ /04 Solid AISI 304 + /16 Solid AISI 316	Landing/stairs	Side mounted	+ /8 (12x20) + /10 (15x20)	Both sides: 1 straight / 1 inclined
	BI320.31	+ /04 Solid AISI 304 + /16 Solid AISI 316	Stairs	Top mounted	+ /8 (12x20) + /10 (15x20)	To the left (seen from the outside). Inclined U according to project specifications
	BI320.32	+ /04 Solid AISI 304 + /16 Solid AISI 316	Stairs	Top mounted	+ /8 (12x20) + /10 (15x20)	To the right (seen from the outside). Inclined U according to project specifications
	BI320.33	+ /04 Solid AISI 304 + /16 Solid AISI 316	Stairs	Top mounted	+ /8 (12x20) + /10 (15x20)	Both sides. Angle according to project specifications
	BI320.41	+ /04 Solid AISI 304 + /16 Solid AISI 316	Stairs	Side mounted	+ /8 (12x20) + /10 (15x20)	To the left (seen from the outside). Inclined U according to project specifications
	BI320.42	+ /04 Solid AISI 304 + /16 Solid AISI 316	Stairs	Side mounted	+ /8 (12x20) + /10 (15x20)	To the right (seen from the outside). Inclined U according to project specifications
	BI320.43	+ /04 Solid AISI 304 + /16 Solid AISI 316	Stairs	Side mounted	+ /8 (12x20) + /10 (15x20)	Both sides. Angle according to project specifications

- Apply structural silicone sealant to fix the glass panel.
- Please see page 24 and 25 for further details about the different anchoring bases (top and side mounted).
- The prices for the uprights include snap covers fitting M8 anchors or M8 bolts+ tread nuts. Please see page 33 for further information about anchoring according to mounting surface.
- For B-INOX 320 the maximum distance between uprights is 1m (Unless the glass manufacturer recommends otherwise). CBM does not supply the glass panels.





Binox310 Light

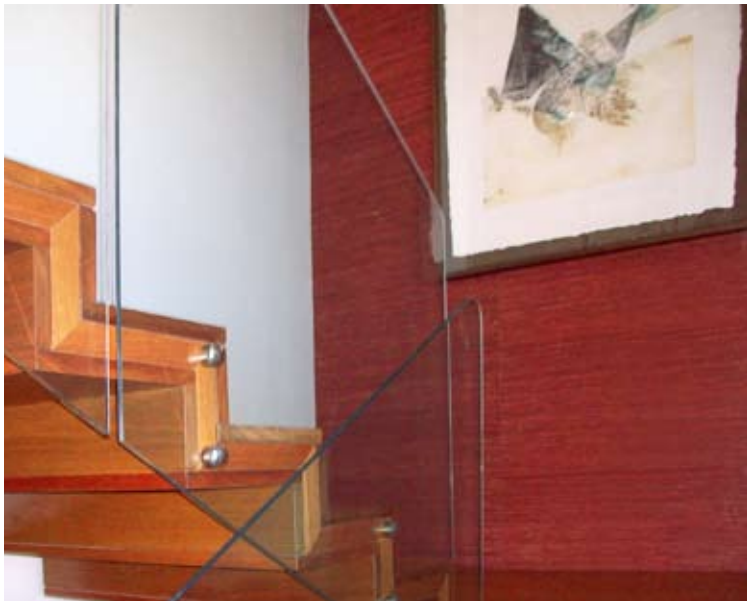
For Indoor Use Only

These uprights benefit from the same features as binox -310. They are made from solid AISI 304 grade stainless steel, but measure 50x8 instead of 50 x12.

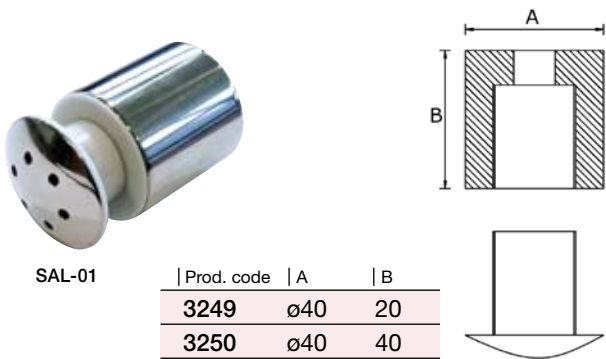
The whole range of 310 models is available as light designs. The lighter visual impact and lower cost makes this design the ideal solution for indoor applications.

BinoxSAL

Point Fittings for Tempered or Tempered-laminated Glass Solutions

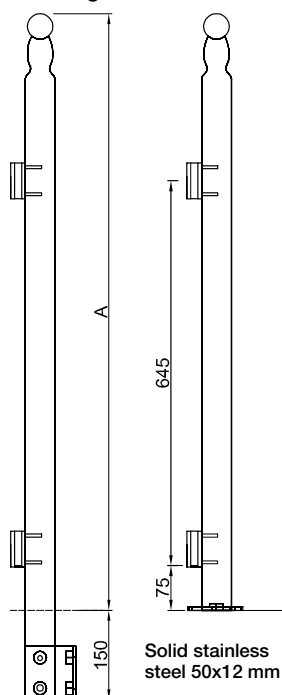


SAL-01 Wall-to-glass point fitting from CBM.



Drawing No	Product Code	Height (A) mm	Grade of Stainless Steel	Surface	Fixing Details	Included in the Price
1	BI400.1	1000	+/-04 Solid AISI 304 +/-16 Solid AISI 316	Horizontal run	Top mounted	• Pre-threaded holes for the fixing of the front mounted pz-2 clamps
	BI400.1A	1100				
2	BI400.2	1000	+/-04 Solid AISI 304 +/-16 Solid AISI 316	Horizontal run	Side mounted	• Pre-threaded holes for the fixing of the front mounted pz-2 clamps
	BI400.2A	1100				
3	BI400.3	1000	+/-04 Solid AISI 304 +/-16 Solid AISI 316	Corner in horizontal run	Top mounted	• Pre-threaded holes for the fixing of the front mounted pz-2 clamps • 90° angle bend
	BI400.3A	1100				
4	BI400.4	1000	+/-04 Solid AISI 304 +/-16 Solid AISI 316	Stairs	Top mounted	• Pre-threaded holes for the fixing of the front mounted pz-2 clamps
	BI400.4A	1100				
5	BI400.5	1000	+/-04 Solid AISI 304 +/-16 Solid AISI 316	Stairs	Side mounted	• Pre-threaded holes for the fixing of the front mounted pz-2 clamps
	BI400.5A	1100				
6	BI400.6	1000	+/-04 Solid AISI 304 +/-16 Solid AISI 316	Stairs/landing	Top mounted	• Pre-threaded holes for the fixing of the front mounted pz-2 clamps • Simple ball connector prod. code BI17
	BI400.6A	1100				
7	BI400.7	1000	+/-04 Solid AISI 304 +/-16 Solid AISI 316	Stairs/landing	Side mounted	• Pre-threaded holes for the fixing of the front mounted pz-2 clamps • Simple ball connector prod. code BI17
	BI400.7A	1100				
8	BI400.8	1000	+/-04 Solid AISI 304 +/-16 Solid AISI 316	Concave corner in horizontal run	Side mounted	• Pre-threaded holes for the fixing of the front mounted pz-2 clamps • 90° angle bend
	BI400.8A	1100				
9	BI400.9	1000	+/-04 Solid AISI 304 +/-16 Solid AISI 316	Convex corner in horizontal run	Side mounted	• Pre-threaded holes for the fixing of the front mounted pz-2 clamps • 90° angle bend
	BI400.9 A	1100				

Basic dimensions: The different B·INOX-400 designs share the following measures
A = Height A



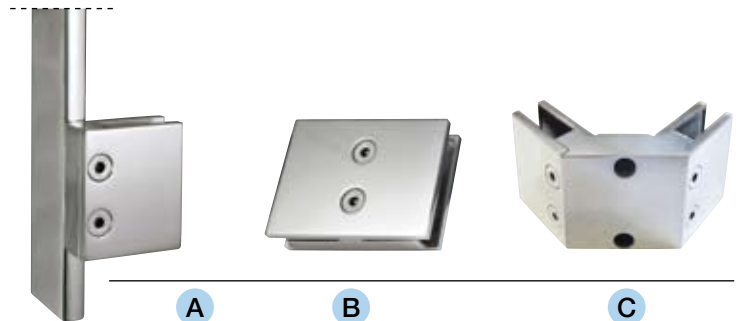
- Please see page 24 and 25 for further details about the different anchoring bases (top and side mounted).
- The prices for the uprights include snap covers fitting M8 anchors or M8 bolts+ tread nuts. Please see page 33 for further information about anchoring according to mounting surface.
- For binox 400 the maximum distance between uprights is 1,5 (Unless the glass manufacturer recommends otherwise). CBM does not supply the glass panels.
- B·INOX-400 complies with the Spanish Regulations CTE SU and CTE AE (In accordance with the EU Construction Products Directive 89/106/ECC) regarding heights, configuration and loads for residential, commercial and office applications.
- For use in installations with a drop of 6 m or higher the references with height (A) = 1100 mm should be used to comply with Standards.





Pz-2 Clamps for B·INOX-400

Photo Example	Product Code	Features/Use	Grade of Stainless Steel	Glass Thickness (mm)	Same Features, but with Bottom Stop. Product Code
A	3212F	simple clamp, end uprights	AISI-316	8	3213F
	3225F			10	3227F
	3220F		AISI-304	8	3221F
	3226F			10	3228F
B	3214	double clamp, interm. uprigts.	AISI-316	8	3215
	3229			10	3231
	3223		AISI-304	8	3224
	3230			10	3232
C	3233	90° double clamp, convex corner	AISI-316	8	3233T
	3234			10	3234T
	3235		AISI-304	8	3235T
	3236			10	3236T
	3237	90° double clamp, concave corner	AISI-316	8	3237T
	3238			10	3238T
	3239		AISI-304	8	3239T
	3240			10	3240T
	3241	simple clamp for stairs	AISI-316	8	3241T
	3242			10	3242T
	3243		AISI-304	8	3243T
	3244			10	3244T
	3280	double clamp for stairs	AISI-316	8	3280T
	3281			10	3281T
	3282		AISI-304	8	3282T
	3283			10	3283T
	3284	mixed double clamp for stairs/landing	AISI-316	8	3284T
	3285			10	3285T
	3286		AISI-304	8	3286T
	3287			10	3287T



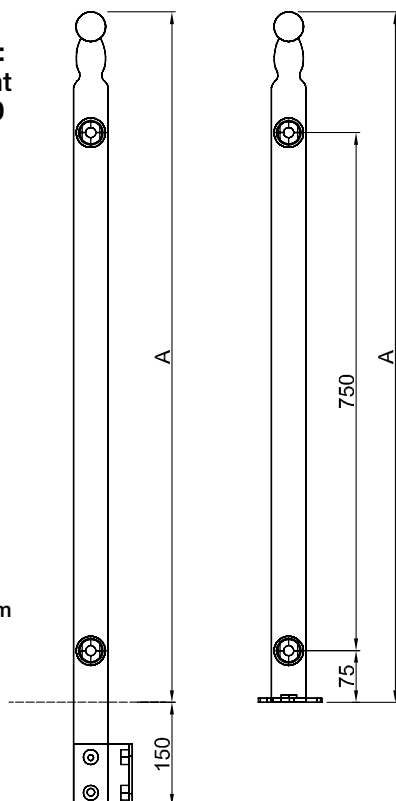
B·INOX-410 for Continuous Glass Panels ▲

This design is only applicable in horizontal runs. The PZ-3 clamps used for this design create a structural glass wall effect, due to the use of continuous glass panels.

Drawing No	Product Code	Height (A) mm	Grade of Stainless Steel	Surface	Fixing Details	Included in the Price
1	BI100.1	1000	+/-04 Solid AISI 304 +/-16 Solid AISI 316	Horizontal run	Top mounted	• 2 adjustable ball connectors for ø22 mm tubes
	BI100.1A	1100				
2	BI100.2	1000	+/-04 Solid AISI 304 +/-16 Solid AISI 316	Horizontal run	Side mounted	• 2 adjustable ball connectors for ø22 mm tubes
	BI100.2A	1100				
3	BI100.3	1000	+/-04 Solid AISI 304 +/-16 Solid AISI 316	Corner in horizontal run	Top mounted	• 2 90° fixed half-ball connectors for ø22 mm tubes • 90° angle bend BI19
	BI100.3A	1100				
4	BI100.4	1000	+/-04 Solid AISI 304 +/-16 Solid AISI 316	Stairs	Top mounted	• 2 adjustable ball connectors for ø22 mm tubes
	BI100.4A	1100				
5	BI100.5	1000	+/-04 Solid AISI 304 +/-16 Solid AISI 316	Stairs	Side mounted	• 2 adjustable ball connectors for ø22 mm tubes
	BI100.5A	1100				
6	BI100.6	1000	+/-04 Solid AISI 304 +/-16 Solid AISI 316	Stairs/landing	Top mounted	• 2 double-ball connectors for ø22 tubes combining stairs/landing • Simple ball connector prod. code BI17
	BI100.6A	1100				
7	BI100.7	1000	+/-04 Solid AISI 304 +/-16 Solid AISI 316	Stairs/landing	Side mounted	• 2 double-ball connectors for ø22 tubes stairs/landing • Simple ball connector prod. code BI17
	BI100.7A	1100				
8	BI100.8	1000	+/-04 Solid AISI 304 +/-16 Solid AISI 316	Concave corner in horizontal run	Side mounted	• 2 90° fixed half-ball connectors for ø22 mm tubes • 90° angle bend
	BI100.8A	1100				
9	BI100.9	1000	+/-04 Solid AISI 304 +/-16 Solid AISI 316	Convex corner in horizontal run	Side mounted	• 2 90° fixed half-ball connectors for ø22 mm tubes • 90° angle bend
	BI100.9A	1100				

Basic dimensions:
The different B-INOX-100 designs share the following measures
A = Height A

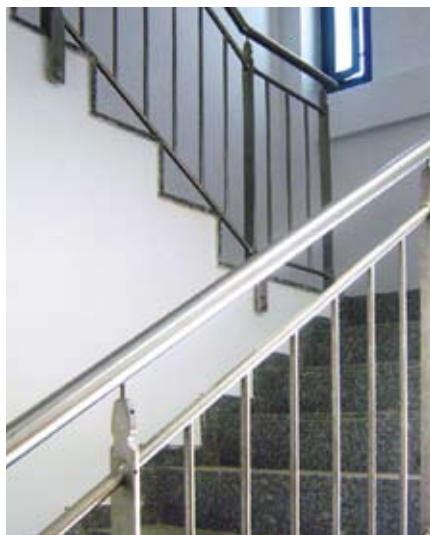
Solid stainless steel 50x12 mm





Drawing
No

- Please see page 24 and 25 for further details about the different anchoring bases (top and side mounted).
- The prices for the uprights include snap covers fitting M8 anchors or M8 bolts+ tread nuts. Please see page 33 for further information about anchoring according to mounting surface.
- For binox 100 the maximum distance between uprights is 1,2
- B-INOX-100 complies with the Spanish Regulations CTE SU and CTE AE (In accordance with the EU Construction Products Directive 89/106/ECC) regarding heights, configuration and loads for residential, commercial and office applications.
- For use in installations with a drop of 6 m drop or higher the references with height (A) = 1100 mm should be used to comply with Standards.



Components for B-INOX-100 Installations

A vertical bar section for horizontal runs

The prod. code for AISI 304 is 100.BP/04

The prod. code for AISI 316 is 100.BP/16

The vertical tubes ($\varnothing 15 \times 1,5$ mm) are welded onto the 2 horizontal tubes ($\varnothing 22 \times 1,5$ mm).

A vertical bar section for stairs

The prod. code for AISI 304 is 100.BE/04

The prod. code for AISI 316 is 100.BE/16

The vertical tubes ($\varnothing 15 \times 1,5$ mm) are welded onto the 2 horizontal tubes ($\varnothing 22 \times 1,5$ mm) with an inclination according to project specification.

How to calculate the quantity of vertical tubes

Premises:

_Maximum distance between vertical tubes: 100 mm

_Maximum distance between uprights: 1200 mm

Complying with these premises the project will be manufactured with equally distributed sections with their corresponding equally distributed vertical tubes.

End Cap for $\varnothing 22$ Tube

Prod. code BI12/04 and BI12/16

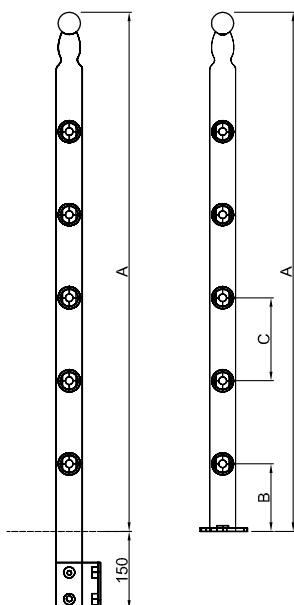


Drawing No	Product Code	Height (A) mm	Grade of Stainless Steel	Surface	Fixing Details	Included in the Price
1	BI200.1	1000	+/-04 Solid AISI 304 +/-16 Solid AISI 316	Horizontal run	Top mounted	• 5 adjustable ball connectors for ø15 mm tubes
	BI200.1A	1100				
2	BI200.2	1000	+/-04 Solid AISI 304 +/-16 Solid AISI 316	Horizontal run	Side mounted	• 5 adjustable ball connectors for ø15 mm tubes
	BI200.2A	1100				
3	BI200.3	1000	+/-04 Solid AISI 304 +/-16 Solid AISI 316	Corner in horizontal run	Top mounted	• 5 90° fixed half-ball connectors for ø15 mm tubes • 90° angle bend
	BI200.3A	1100				
4	BI200.4	1000	+/-04 Solid AISI 304 +/-16 Solid AISI 316	Stairs	Top mounted	• 5 adjustable ball connectors for ø15 mm tubes
	BI200.4A	1100				
5	BI200.5	1000	+/-04 Solid AISI 304 +/-16 Solid AISI 316	Stairs	Side mounted	• 5 adjustable ball connectors for ø15 mm tubes
	BI200.5A	1100				
6	BI200.6	1000	+/-04 Solid AISI 304 +/-16 Solid AISI 316	Stairs/landing	Top mounted	• 5 double-ball connectors for ø15 mm tubes combining stairs and landing • Simple ball connector prod. code BI17
	BI200.6A	1100				
7	BI200.7	1000	+/-04 Solid AISI 304 +/-16 Solid AISI 316	Stairs/landing	Side mounted	• 5 double-ball connectors for ø15 mm tubes combining stairs and landing • Simple ball connector prod. code BI17
	BI200.7A	1100				
8	BI200.8	1000	+/-04 Solid AISI 304 +/-16 Solid AISI 316	Concave corner in horizontal run	Side mounted	• 5 90° fixed half-ball connectors for ø15 mm tubes • 90° angle bend
	BI200.8A	1100				
9	BI200.9	1000	+/-04 Solid AISI 304 +/-16 Solid AISI 316	Convex corner in horizontal run	Side mounted	• 5 90° fixed half-ball connectors for ø15 mm tubes • 90° angle bend
	BI200.9 A	1100				

Basic dimensions:
The different B-INOX-200 designs share the following measures
A = Height A

Solid stainless steel 50x12 mm

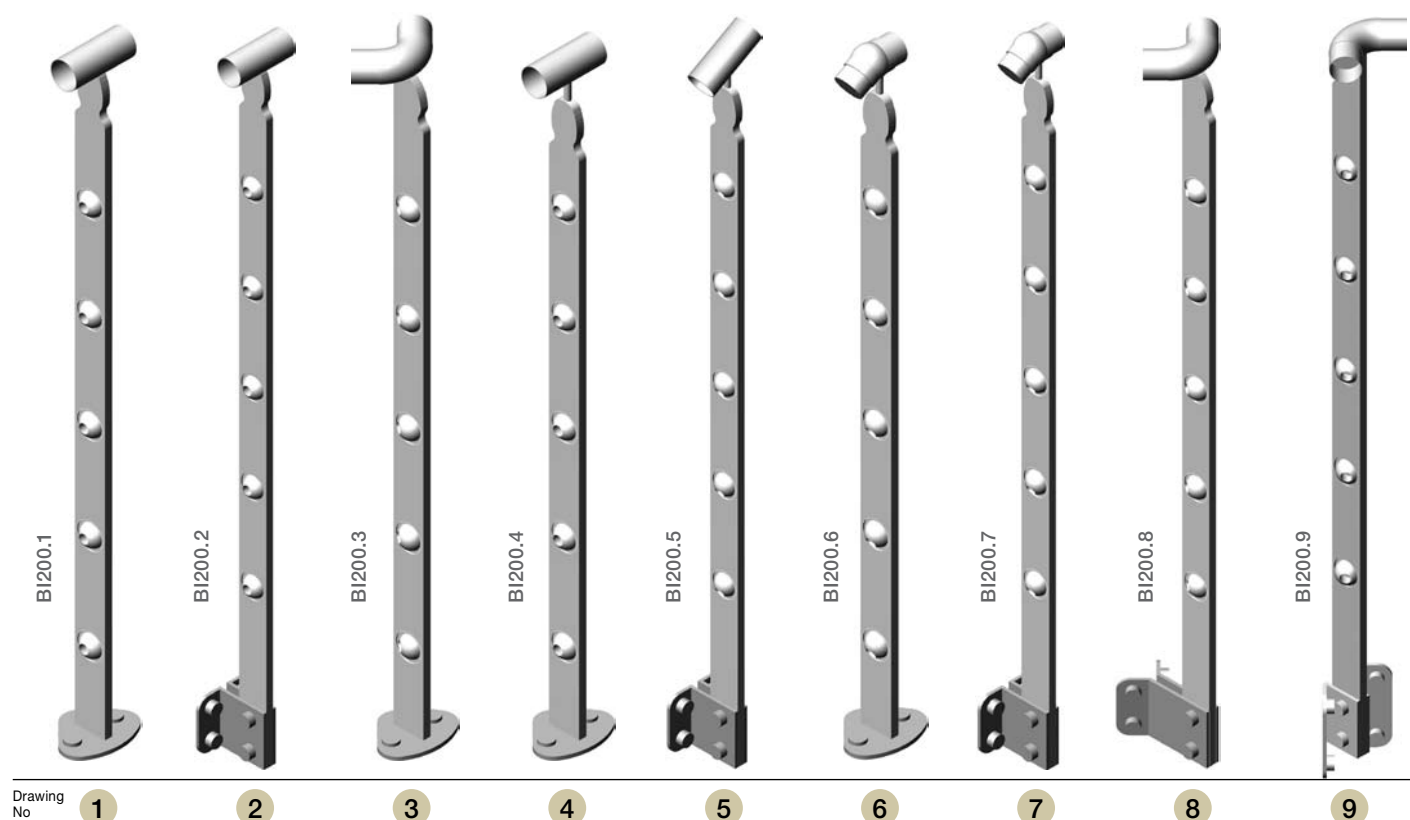
The standard B-INOX-200 upright is delivered with 5 ball connectors, but it is also available with 3, 4 or 6 ball connectors.



| Distance B | Distance C

5 ball connectors	130	160
3 ball connectors	150	300
4 ball connectors	150	200
6 ball connectors	130	115





◀ Option B·INOX-210

- All the different B·INOX-200 models are also available with holes for cable installation. The end-uprights are supplied with the necessary cable connections for the eyebolts of the tensioning fittings. The corner uprights are provided with countersunk holes to avoid its wearing away.
- Please indicate diameter of cable in order specification.
- CBM does not manufacture cables, but offers to supply these together with uprights.

Option B·INOX-200I or 210I

The B·INOX-200 and B·INOX-210 uprights are also available as cranked uprights with the handrail supporting part angled inwards, so it is impossible for a child to climb on the horizontal tubes.

This is indicated with an "I" in the order specification. For instance: BI200I.1/04.



Components for B·INOX-200 or 200I Installations

ø15x1,5 mm Tube

Prod. code BI13/04 and BI13/16



End cap for ø15 tube

Prod. code BI14/04 and BI14/16



Attention: CBM supplies the ø15 mm tubes with 50 mm projection from the end-uprights, if not indicated otherwise.

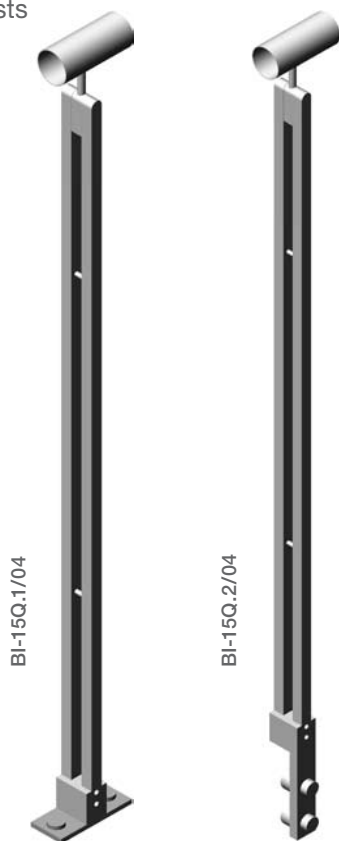
- Please see page 24 and 25 for further details about the different anchoring bases (top and side mounted).
- The prices for the uprights include snap covers fitting M8 anchors or M8 bolts+ tread nuts. Please see page 33 for further information about anchoring according to mounting surface.
- For binox 200/210/200I/210I the maximum distance between uprights is 1,5 m.

Binox 15Q

Available for indoor use. Made from
AISI 304 grade stainless steel.

Height 1 m.

The B·INOX-15Q
upright consists
of 2 solid
15x15 mm
bars with a
separation
of 15 mm.



B·INOX-15Q COMPLEMENTS



Option Prod. Code + /20

- A support cartridge for $\varnothing 15$ mm tubes.
- Available for 3,4,5 or 6 horizontal tubes.
- This upright is designed both for indoor and outdoor use.



Option Prod. Code + /30

Clamp PZ-1 with fixing accessories for B·INOX-15Q.

Available for 2 clamps (both sides) or only 1 clamp.

B·INOX-15Q COMPLEMENTS



Option Prod. Code + /31

U-channel (L=700 mm) with fixing accessories for B·INOX-15Q.

Available for 4+4 and 5+5 glass thicknesses. When used in staircases the end of the U-channel has an inclined cut.

Available with 2 U-channels (both sides) or 1 U-channel.

B·inox SM

Complements for the B·INOX-SM Railing System

B·INOX-SM is a complement for brick balconies or other constructions that require a top railing to meet Building Regulations.

These are supplied with height and ball connectors for $\varnothing 15$ mm tubes according to each project specification.

The anchoring base is as standard.

Prod. Code BI500.1

Straight Upright.

Measurement specifications in purchase order.

Prod. Code BI500.2

Corner Upright (90° angle bend included).

Measurement specifications in purchase order.



Handrails

B·INOX Railing System

Standard Handrails Tube $\varnothing 43 \times 1,5$ mm

All B·INOX designs except for B·INOX-320 are installed with a handrail, and if nothing else is indicated, B·INOX is delivered with standard handrails of stainless steel AISI 304 or 316.

STANDARD OPTION



Tube

Prod. Code BI10/04 (AISI-304)

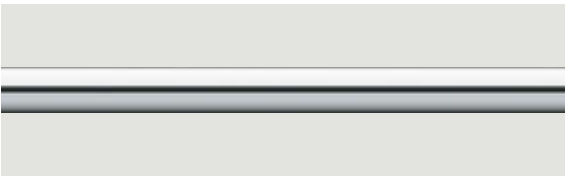
Prod. Code BI10/16 (AISI-316)

The price includes

- The tubes are cut to measure according to project requirements.
- Pre-installed handrail fittings placed according to project specifications. It is not necessary to indicate this in the order specification.
- Handrails are delivered up to 3,8 m (above this length an extra transport cost is charged)
- If the railings or balustrade include several handrails, these are joined with expansive tube joints, which are fitted into the uprights. These will be delivered whenever required. It is not necessary to indicate these in the order specification.

Please see page 33 for further information about installation.

ALTERNATIVE OPTION



Tube

Prod. Code BI10S/04

Prod. Code BI10S/16

The price includes

6 m tubes according to project requirements. (Above 3,8 m lengths an extra transport cost is charged).

Upright Mounted Handrail Brackets (Please indicate in purchase order).



Fixed Bracket for $\varnothing 43$ Tube

Prod. Code BI30/04

Prod. Code BI30/16



Adjustable Bracket for $\varnothing 43$ Tube

Prod. Code BI31/04

Prod. Code BI31/16

B·INOX suggestion: The installer may use a riveter and $\varnothing 4$ stainless steel rivet nuts to fit the brackets to the tube. The necessary equipment is required to cut the tube to length and polish the tube ends.

HANDRAIL ACCESSORIES



End Cap for ø43 Tube

Prod. Code BI11/04

Prod. Code BI11/16

Press to install. No welding required.

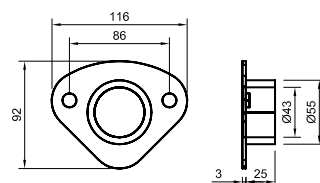


Wall Plate for Lateral Fixation

Prod. Code BI16/04

Prod. Code BI16/16

This flange is used to fix handrails to the wall.

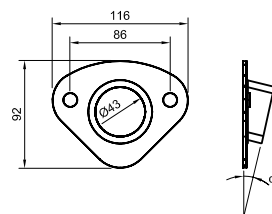


Angled Wall Plate for Lateral Fixation

Prod. Code BI16I/04

Prod. Code BI16I/16

Degree of angle made-to-measure according to project requirements.



HANDRAIL CONNECTORS AND ANGLE BENDS

Application:

Corner in Horizontal Run



90° Angle Bend

Prod. Code BI19/04 (AISI-304)

Prod. Code BI19/16 (AISI-316)

Angle Bend < 90°

Prod. Code BI20/04

Prod. Code BI20/16

Degree of angle made-to-measure according to project requirements.

Angle Bend > 90°

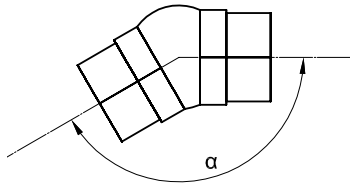
Prod. Code BI21/04

Prod. Code BI21/16

Degree of angle made-to-measure according to project requirements.

The handrail is fastened to the angle bend with a M6 countersunk Allen bolt.



Application:**Change in Slope from Stairs to Landing or
from Half-landing to Stairs****Simple Ball Connector**

Prod. Code BI17/04

Prod. Code BI17/16

Minimum angle 130° (or 50° depending on viewpoint).

The handrail is fastened to the simple ball connector with a M6 countersunk Allen bolt.

**Application:****From Stairs to Landing with a 90° Turn****Connector 22**

Simple ball connector + tube + angle bend.

Prod. Code BI22/04

Prod. Code BI22/16

- This connector permits a continuous handrail from stairs to 90° turns in landings.
- The technical department calculates the length of the tube from the information given by the customer.
- The handrail is fastened to the angle bend with metal adhesive.

**Connector 23**

Adaptable length connector + tube + angle bend.

Prod. Code BI23/04

Prod. Code BI23/16

- This connector permits a continuous handrail from stairs to 90° turns in landings. (Height adjustable and therefore easy to install)
- The technical department calculates the length of the tube from the information given by the customer.
- The handrail is fastened to the length connector with a M6 Allen bolt and to the angle bend with a M6 countersunk Allen bolt.

Application:

360° Turn in Stairs



Connector 24

Angle bend + tube + angle bend.

Prod. Code BI24/04

Prod. Code BI24/16

- The technical department calculates the length of the tube from the information given by the customer.
- The handrail is fastened to the angle bend with metal adhesive.



Connector 25

Adjustable angle bend + tube + adjustable angle bend.

Prod. Code BI25/04

Prod. Code BI25/16

- The technical department calculates the length of the tube from the information given by the customer.
- The different parts are fastened with metal adhesive.

Application:

360° Turns from Stairs to Landing



Connector 27

Simple ball connector + tube + angle bend + tube + angle bend.

Prod. Code BI27/04

Prod. Code BI27/16

Our technical department will calculate the length of the tube from the information given by the customer. To guarantee a secure configuration the position of each upright will be determined according to project specifications.

Application:

90° Turn in Stairs



Connector 28

Flexible angle bend.

Prod. Code BI28/04

Prod. Code BI28/16

- This 90° angle bend is bisected. The two parts of this angle bend may be turned with regards to their bisector and perpendicular axis. Therefore it serves as joint for two handrails in a flight of stairs with 90° turn.
- The different parts are fastened with metal adhesive.

Attention: The use of these connectors is not always possible. CBM will confirm viability in each case.

Handrails

B·INOX Railing System

Rectangular Handrail 50x20

Accessories for Rectilinear Railings Design

STANDARD OPTION



Tube. External measures 50 x 20 and thickness 1,5.

Prod. Code BI40/04

Prod. Code BI40/16

The price includes

- The tubes are cut to measure according to project requirements.
- Pre-installed handrail fittings are placed according to project specifications. It is not necessary to indicate these in the order specification.
- Handrails are delivered up to 3,8 m (above this length an extra transport cost is charged).
- If the balustrade/railings consist of several handrail sections, which have to be joined, this will be done with expansive tube joints. These tube joints are concealed inside the tube and fitted into the uprights. They will be included whenever required. It is not necessary to indicate this in the order specification.
- End caps are welded on handrail ends according to project specifications. (Prod. code BI41/04 or BI41/16).

ALTERNATIVE OPTION



Tube. External measures 50 x 20 and thickness 1,5.

Prod. Code BI40S/04

Prod. Code BI40S/16

The price includes

6 m tubes according to project requirements. (Above 3,8 m lengths an extra transport cost is charged).

The installer may use a riveter and ø4 stainless steel rivet nuts to fit the brackets to the tube. The necessary equipment is required to cut the tube to length and polish the tube ends.



Fixed Bracket for ø43 Tube

Prod. Code BI32/04

Prod. Code BI32/16



Adjustable Bracket for ø43 Tube

Prod. Code BI33/04

Prod. Code BI33/16

End caps

Prod. Code BI41S/04

Prod. Code BI41S/16

Press to install end caps in this option.

HANDRAIL CONNECTORS AND ANGLE BENDS



90° angle bend

Prod. Code BI42/04
Prod. Code BI42/16

This angle bend allows two 50x20 tubes to be joined in a right-angled corner in a horizontal run.



Simple ball connector

Prod. Code BI43/04
Prod. Code BI43/16

This connector allows two 50x20 tubes to be joined between stairs and landings at varying angles.

Wooden Handrail

It is possible to install B·INOX with wooden handrails using the following handrail brackets.



Handrails Bracket for ø43

Prod. Code BI30/04
Prod. Code BI30/16



Adjustable Handrail Bracket for ø43

Prod. Code BI31/04
Prod. Code BI31/16



Handrail Bracket for Flat Designs

Prod. Code BI32/04
Prod. Code BI32/16



Adjustable Handrail Bracket for Flat Designs

Prod. Code BI33/04
Prod. Code BI33/16



Embedded Handrail Bracket

Prod. Code BI34/04
Prod. Code BI34/16



Adjustable Embedded Handrail Bracket

Prod. Code BI35/04
Prod. Code BI35/16
Ø ext. 43/ Ø int. 40.

Installation: Reduce diameter of wooden handrail to fit into handrail bracket and glue. This solution provides a continuous handrail, since the bracket diameter is levelled with the wooden handrail.

The mounting screws for wood is not included for prod. code BI30/31/32/33.

The brackets for round and embedded handrails are also available for other diameters. (This might involve an extra charge).

Anchoring Bases

B·INOX Railing System

Top Mounted on a Horizontal Surface or Step

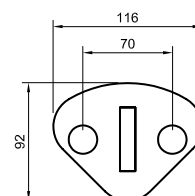
All anchoring bases are welded to the upright.

STANDARD ANCHORING BASE



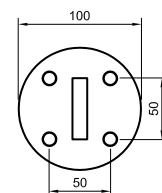
The Standard Anchoring Base Is Available for All Designs Except for B·INOX-320

Mounted with 2 x M8 anchors.



Standard Anchoring Base for B·INOX-320

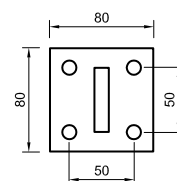
Mounted with 4 x M8 anchors.



ALTERNATIVE ANCHORING BASES AVAILABLE

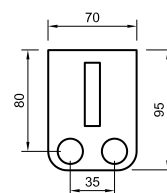


Square Base 80x80 BI-BC



Asymmetric Base BI-BA

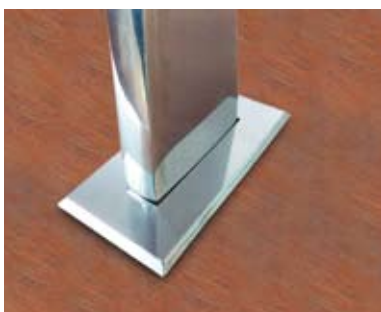
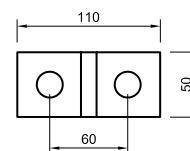
Application example: This base is used for installations where floor or steps have a projecting edge, but the uprights have to be mounted as closed to the edge as possible.



Rectangular Base BI-BR

Application example: It is designed for installation on narrow structures or tubes.

Attention: This base is also available for inclined ramps. (Made-to-measure according to project specifications).



Option: Available with Countersunk Holes

All mentioned bases are available with countersunk holes for countersunk bolts without snap covers. This option is used when the balustrade is installed before the flooring in order to provide a level base.

Furthermore we supply this solution with a rectangular cover for the joint between floor and uprights.

Side Mounted on String or Step

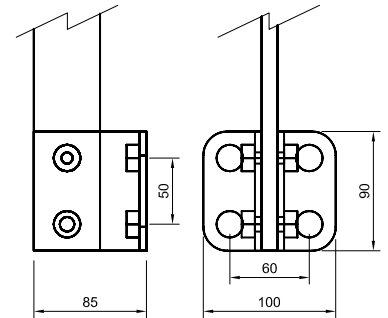
All bases are delivered bolted to the upright.



A Standard Side Mount

The upright is mounted 35 mm from the string or side of the step. This is in most cases enough space when the floor or the steps have a projecting edge.

4 M8 mounting bolts are used.

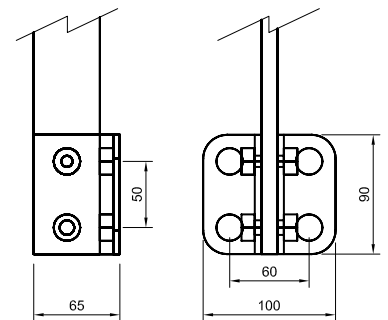


A Narrow Side Mount

Prod. code BI-BLE

The upright is mounted 15 mm from the string or side of the step. This is the appropriate solution when for instance there is very little space in the stairwell, and the projecting edge is not hindering this possibility.

4 M8 mounting bolts are used.

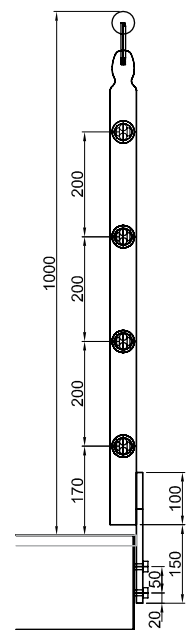


A Side Mount on Top of the Tread

Prod. code BI-BLF

This solution is appropriate when it is not possible or it is preferable to avoid drilling the tread (for instance when there is a risk the marble will break) but at the same time there is very little space in the stairwell. (Less than 125mm between two flights of stairs).

2 M8 mounting bolts are used.



Accessories

B·INOX Railing System

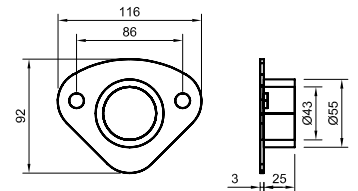
Accessories to Reinforce the Installation

If the mounting conditions make it difficult to anchor the railings in a proper way, CBM recommends to reinforce the installation using the following accessories.



Wall Plate for Lateral Fixation of Ø43 Handrail

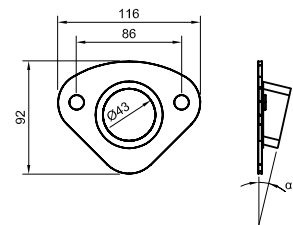
Prod. code BI16/04
Prod. code BI16/16



Angled Wall Plate for Lateral Fixation of Ø43 Handrail

Prod. code BI16I/04
Prod. code BI16I/16

Degree of angle made-to-measure according to project requirements.



Flange for Wall Fixation of Ø15 Tube

Prod. code BI36/04
Prod. code BI36/16

Angle Flange for Wall Fixation of Ø15 Tube:

Ref. BI36I/04
Ref. BI36I/16

Degree of angle made-to-measure according to project requirements.



Stabilizers for Parallel Uprights

Prod. code BI37/04
Prod. code BI37/16

These stabilizers are used to join two uprights, when two flight of stairs meet. The uprights have to be aligned and positioned between 50 and 80 mm from each other.



Stabilizer for use between Upright and Front Wall

Prod. code BI38/04
Prod. code BI38/16

This stabilizer is adjustable and allows the upright to be fixed to a front wall.

B·INOX Gates

Stainless Steel Tubes or Glass Panel Infill

When required B·INOX may be supplied with gate with stainless steel tubes or glass panel infill.

Prod.code BI-P01

Features

- ø25 and ø10 stainless steel tubes.
- The gate is delivered welded and assembled.
- Two pivots are included in the gate price. It is possible to adjust the distance between wall/fixing point and gate.
- Gate dimensions according to project specifications.
- Mounted on wall or B·INOX upright.
- Strike plate.



Prod.code BI-P02

Features

- Stainless steel fittings from CBM. Including:
Hinges B-190qp
Lock CCBM-PS-MINI
- Fitting accessories for wall or upright.
- Strike plate for wall or upright.

Lock CCBM-PS-MINI

Prod. code 2143



Hinges B-190QP

Prod. code 3016

Glass thickness 6 mm

Prod. code 3017

Glass thickness 8-10 mm



This wall mounted handrail solution **B·INOX-PS** is easy to install and is the ideal complement to the railing system.

Basis Components

- **ø43 x 1.5 diameter stainless steel tube** (AISI 316 or 304).
- **End caps ø43** (prod. code BI11).
- **Pre-installed wall brackets.** CBM recommends the maximum distance between these to be 1,1 m to secure maximum rigidity in the installation. The brackets are delivered pre-installed without any welding.

Available lengths

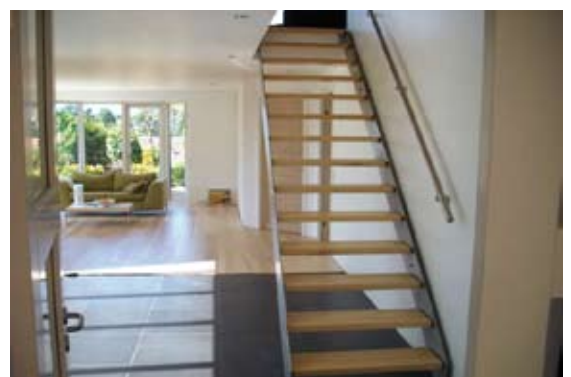
- CBM supplies B·INOX-PS handrails in a **maximum length of 3,8 m** (Longer handrails up to 6 m has an extra transport charge) .
- If the balustrade/railings consist of several handrail sections, which have to be joined, this will be done with internal tube joints. These tube joints are concealed inside the tube and fitted onto the uprights. They will be included whenever required. It is not necessary to indicate this in the order specification.

Fixing accessories

CBM supplies each wall bracket with 2 screws and wall plugs for installation in well structured walls.

Please request further information in case other fixing accessories are required for other wall conditions.

The B·INOX-PS is delivered cut to measure according to each project requirement.



B•INOX-PS-V is a glass mounted handrail solution. The fixing brackets are mounted onto tempered glass panels. The design is similar to B•INOX-PS, so both models can be mounted in the same installation.



Required drill holes: $\varnothing 12$.

ACCESSORIES FOR B•INOX-PS OR B•INOX-PS-V



Angle Bend

Prod. code BI19



Simple Ball Connector

Prod. code BI17

Railings with Special Features

Handicap Ramp

B·INOX balustrade may be installed in entrance ramps for handicapped people in order to meet Regulations. CTE- SU and CTE AE (In accordance with the EU Construction Products Directive 89/106/ECC)

To Sum up the Ramp Standards for Wheel Chair Users.

- Slope of the ramp according to length (= 1), not more than 10 % for 1<3 m, not more than 8% for 1<6 and equal to 6% between 6 and 9 m lengths.
- The ramp should have a width up to $\geq 1,20$ m.
- The handrail may jut out up to 120 mm without affecting the indicated width.
- The height of the plinth base ≥ 100 mm.
- A balustrade is required at one side of the ramp, if there is a larger drop than 1,5 m, and at two sides of the ramp if the ramp is wider than 1,2 m. The top handrail should have a height between 0,9 and 1,1 m.
- An additional handrail is required at a height between 0,65 and 0,75 m.



CBM proposes the necessary elements to meet Regulations, but is not responsible for a correct use of these.

For all the B·INOX designs it is possible to install the following elements:

Double Handrail

It is mounted on handrail brackets on the uprights between a height of 600 and 800 mm.

(The installer may use a riveter and $\varnothing 4$ stainless steel rivet nuts to fit the brackets to the tube.)

Plinth Base

Stainless steel plinth base protects 100 mm of the lower part of the upright. It is fixed to each upright.

It is made-to-measure according to project specifications.





B·INOX polished finish



B·INOX brushed finish

1 All B·INOX designs are available in two grades of stainless steel: AISI 304 or 316.

Which quality is the most appropriate for which installation?

Due to the cost difference it is important to choose the appropriate solution for each planned b-inox project. Aesthetically there is no difference between the two grades.

High grade stainless steel AISI-316

- Outdoor installations in coast areas, or areas reached by air-streams from the sea.
- Outdoor installations in polluted areas such as industrial estates.
- Outdoor or indoor installations in pool areas.

AISI-304

- Outdoor installations not specified above for AISI 316.
- Indoor installations.

2 Which finishes are available for B·INOX?

Polished finish

All visible surfaces are polished.

Brushed finish

All visible surfaces are brushed.

3 What is the secret of stainless steel? Why does it not rust?

Stainless steel is by definition resistant to corrosion and it is not necessary to apply any protection or extra treatment to improve its appearance and durability. One of the main features of stainless steel is its outer protection layer, which is capable of self-generation after possible damage, when it is in contact with oxygen from air or water. This feature prevents corrosion and maintains the polished or brushed finish for decades.

4 Is any maintenance of B·INOX required?

As with most construction materials as glass, plastic and treated steel, the stainless steel requires a few tasks to maintain the installation in optimum condition during its lifetime. The most critical stage is during the installation.

Corrosion Problems before Handing Over the Installation

Even though stainless steel is an inalterable material there are certain chemical products and behaviours that should be avoided during the installation, since they might result in irreversible damage.

For instance a common problem is splash of mortar or cement when the balustrade is installed. before working with these materials. The balustrade may be cleaned with a solution containing a small amount of phosphoric acid and then rinsed in water. (If deionised it will not be noticeable when dry). In any case mortar cleaner or diluted hydrochloric acid should be avoided. These products would corrode the surface of the stainless steel and require mechanical cleaning methods such as re-polishing.

Another typical problem is rust due to contamination from nearby welding works, because the balustrade has been installed before finishing the construction work.

Therefore whenever possible we recommend to install the b-inox balustrade after finishing any work which might contaminate or damage its surface, as those explained above.

Stainless Steel Maintenance

Outdoor The need for maintenance depends on the atmospheric conditions where the balustrade is installed. Probably such a simple thing as rain will influence positively in the maintenance.

On the other hand it is necessary to pay attention if the balustrade is mounted in areas with special conditions such as polluted industrial zones or towns by the sea. In these areas the concentration of pollutants in the air is higher and therefore also the risk of contaminating the stainless steel surface. For instance on the anchoring base around the snap covers and the bolts.

Indoor Indoor installations does not require much maintenance. It is a question about how to clean off finger marks. They are less visible on a brushed finish, which might be a reason to choose this finish rather than the polished one. Anyway for cleaning of the brushed finish it is advisable to rinse and dry with a soft cloth and apply a mild detergent, and nothing else. We recommend to follow the brushing direction when cleaning. In case of the polished finish we recommend to use any window cleaner not containing chlorides.

Generally speaking it is important to avoid all kinds of products containing chlorides (especially hydrochloric acid), bleaching products and silver cleaners. It is also important to avoid non-stainless steel brushes and steel scouring pads.

Anchoring Accessories

The most appropriate anchoring accessories for the mounting of the B·INOX uprights depend on the surface conditions where they are mounted.

CBM is not responsible for the correct use of the anchoring accessories. The supply of anchoring accessories is optional and the customer may use whatever he considers appropriate according to his experience or knowledge, regardless of those proposed by CBM.



Standard Anchoring Kit

- This kit includes M8x60 expansion bolts for installations in concrete floors.
- Drill holes: $\varnothing 10$ and minimum 53 mm deep.
- Recommend bolt torque: 25 N/m.
- Minimum thickness of mounting surface = 90 mm.

Prod. code BI-F1A: 2 units per top mounted upright (except from B·INOX-320). The quality is galvanized iron 8.8.

Prod. code BI-F2A: Same features as BI-F1A, but in A2 grade stainless steel.

Prod. code BI-F1B: 4 units per side mounted upright and per top mounted B·INOX-320 upright. The quality is galvanized iron 8.8.

Prod. code BI-F2B: Same features as BI-F1B, but in A2 grade stainless steel.



Kit for the Embedded Bases

- This solution is appropriate together with the use of adhesive mortar for installation with poor surface conditions.
- It is easy to use.
- Drill holes: $\varnothing 18$.

Prod. code BI-F15A: For top mounting. It includes 2xM8 bolts.

Prod. code BI-F15B: For side mounting. It includes 4xM8 bolts.



Kit for Anchoring on Metallic String

- It includes M8 bolts with threaded nut and snap cover. The string thickness should be indicated in order specifications to adjust the length of the bolts.
- Drill holes: $\varnothing 10$.

Prod. code BI-F3: 4 units per side mounted upright.

Please request further information in case other anchoring accessories are required for other floor conditions. (Poor surface, wood, etc.)



Installation and Mounting Recommendations

The installation of B·INOX does not require any welding and if the standard option of handrail is chosen (page 18), neither is it necessary to cut or drill any tubes. It is only necessary to anchor the uprights to the floor, step or string and then mount the different elements (handrails, tubes etc.) on the uprights with bolts.


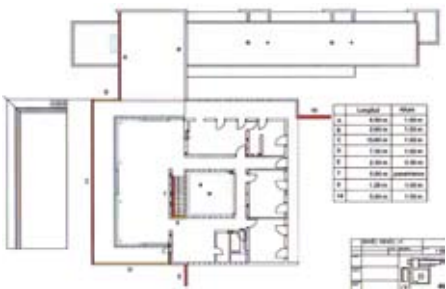

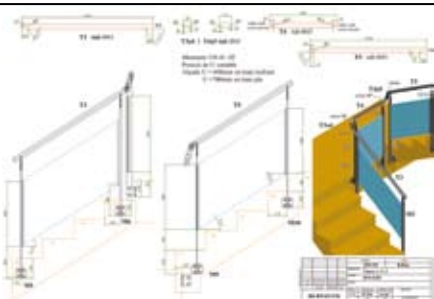

CBM provides installation plans together with the purchase order to guide the installer. As a general rule they will consist of a 3-d simulation of the installation where all elements are specified and marked with a number: uprights, handrail sections, $\varnothing 15$ tubes etc. The distance between the uprights is also indicated in these plans. If the handrail is delivered as standard this distance will also show in the pre-installed fixings.

The Interaction between Customers and CBM

8 Steps to a Successful Cooperation

According to CBM's experience the following procedure guarantees the best possible cooperation and meet customer's expectations concerning quality, cost and time.

Steps

1		Customer	The customer chooses design according to this and the general b-inox catalogue.
2		Customer	The customer sends his drawings and if possible also photos of his project. The following has to be indicated to quote the project correctly: grade of stainless steel, if the uprights should be top or side mounted and any special feature that could influence on the quotation.
3		CBM	CBM will quote the project. Lead time 1 to 3 days.
4		Customer	Customer confirms quotation (= purchase order)
5		CBM	CBM prepares the production plans. Lead time 2 to 3 days.
6		Customer	Customer confirms the production plans.
7		CBM	CBM produces and delivers. Lead time 2-3 weeks (for purchase orders < 20 uprights).
8		Customer	Customer installations. The time needed to mount the railings will depend on project size and the installer's experience, but compared to traditional railings, generally speaking B·INOX is faster to mount, because it is a non-welding system. After drilling the anchoring holes it is only a question about mounting and assembling with bolts.

B·INOX Samples

B·INOX-Business Sample Suit Case

This B·INOX Business Sample Suitcase contains the 10 most representative samples of the b-inox railing system, in both finishes and perfectly protected in a foam rubber cushion.



It is easy to transport and therefore a handy way to demonstrate the B·INOX design and quality.



Simple B·INOX Show-room Sample

A B·INOX section according to customer's choice mounted on a stair structure in CBM's colours.

Dimensions: 70x90 cm.

Corner B·INOX Show-room Sample

This sample shows a combination of a top mounted B·INOX model in stairs and a side mounted B·INOX model in a horizontal run. It is possible to combine any of the different B·INOX designs in this show-room sample.

The angle bend and the simple ball connector are displayed.

Dimensions: 80x110 cm.



Check out more about the great variety of B·INOX designs in our general catalogue.



www.cbmkeymat.com

CBM - Grup Blamar

Pol. Ind. Torrent d'en Puig
Can Bernat, 4
08358 Arenys de Munt (Barcelona)
Catalunya - España
Tel. +34 937 950 666
Fax +34 937 938 087
cbm@blamar.com

Distributor